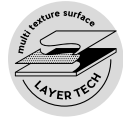


DOHA

Porcelain Tile

22,3x22,3 cm – 8.7x8.7"

blue · green · taupe



- LAND SAND/4,6X18,4
- DOHA TAUPE FLOWER SP/22,3



- LAND WHITE/4,6X18,4
- DOHA BLUE STAR SP/22,3



DOHA

DOHA is a new collection that combines an arabesque design with cutting-edge technology and innovation. Each tile in the collection pays tribute to the Arab world's rich culture, with designs that bring your senses to life, inspired by the intricate beauty so closely associated with the region. The tiles, made with **LAYER TECH** and **SHAPED TECH**, come in a combination of a matt and a glossy finish. With their traditional patterns, each 22.3x22.3 porcelain tile has a unique tale to tell, perfect for creating settings with a blend of modernity and artisanal charm.

DOHA comes in a choice of warm and cold colours that capture the warmth of the desert and the coolness of a starry night. The collection can easily be combined with others, one good example being the LAND collection.

- MAYOLICA PLAIN/15X15
- DOHA GREEN STAR SP/22,3

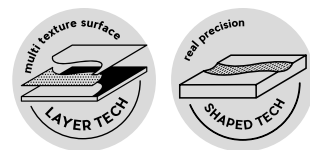
DOHA es la nueva colección que combina diseño arabesco con la última tecnología e innovación. Es una experiencia que celebra la riqueza cultural árabe en cada azulejo. DOHA despierta los sentidos con sus diseños inspirados en la intrincada belleza de la región. Esta colección marca un hito al combinar las revolucionarias tecnologías **SHAPED** y **LAYER TECH** de Harmony. Cada azulejo porcelánico, en formato 22,3x22,3 cm cuenta una historia única con patrones geométricos, creando un ambiente que fusiona la tradición y la modernidad.

La paleta cromática de DOHA es un despliegue de tonos cálidos y fríos que capturan la esencia de la calidez del desierto y la frescura de las noches estrelladas. Desde tonalidades tierra hasta azules que combinan a la perfección con diferentes colecciones de Harmony destacando entre ellas LAND.

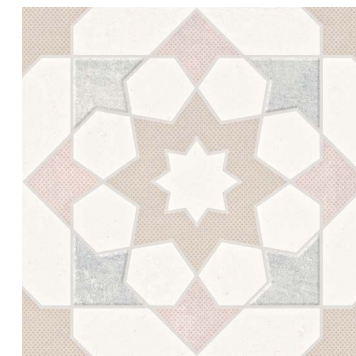


DOHA

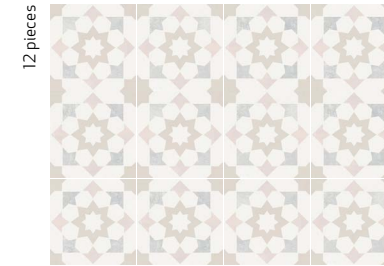
porcelain tile — 22,3x22,3 / 8.7x8.7"



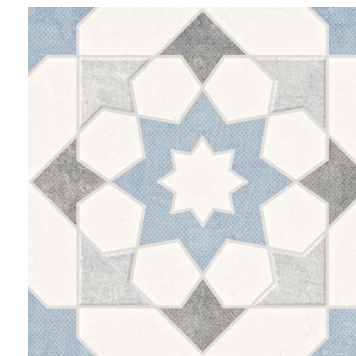
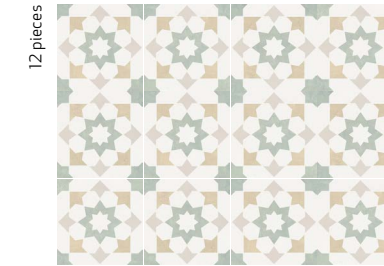
DOHA collection perfectly matches with LAND collection
 Colección DOHA coordina con la colección LAND



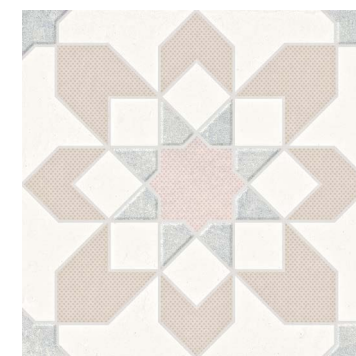
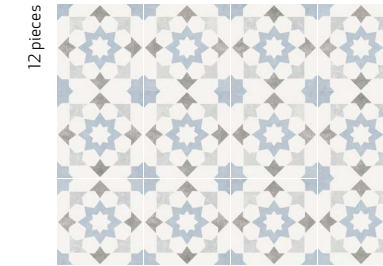
39598 DOHA TAUPE STAR SP/22,3 Q61 (22,3x22,3 cm — 8³/₄x8³/₄")
 5 patterns
 *103 Mapei



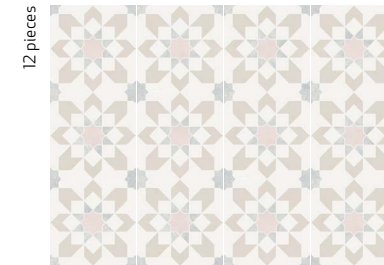
39596 DOHA GREEN STAR SP/22,3 Q61 (22,3x22,3 cm — 8³/₄x8³/₄")
 5 patterns
 *103 Mapei



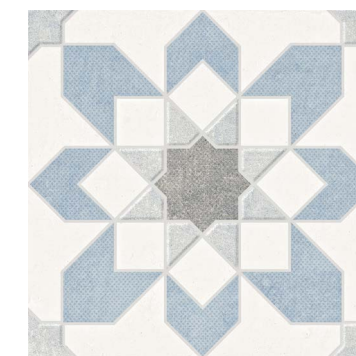
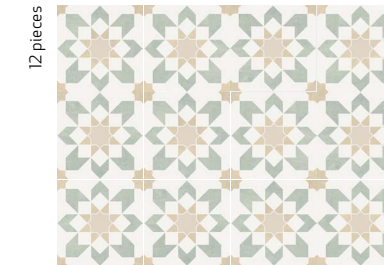
39597 DOHA BLUE STAR SP/22,3 Q61 (22,3x22,3 cm — 8³/₄x8³/₄")
 5 patterns
 *103 Mapei



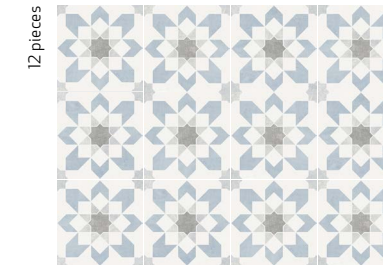
39601 DOHA TAUPE FLOWER SP/22,3 Q61 (22,3x22,3 cm — 8³/₄x8³/₄")
 5 patterns
 *103 Mapei



39599 DOHA GREEN FLOWER SP/22,3 Q61 (22,3x22,3 cm — 8³/₄x8³/₄")
 5 patterns
 *103 Mapei



39600 DOHA BLUE FLOWER SP/22,3 Q61 (22,3x22,3 cm — 8³/₄x8³/₄")
 5 patterns
 *103 Mapei



Recommended joint color - Color de junta recomendado
 *MAPEI|ULTRACOLOR PLUS — *KERAKOLL|FUGABELLA

TECHNICAL CHARACTERISTICS

| | | | | | | | | | | |
|------|-------|-----------------|-------------|--------------|---------------|----------|-----------|---------------|-----------|-------------|
| MATT | GLOSS | SHADE VARIATION | SHOWER WALL | SHOWER FLOOR | FLOOR TRAFFIC | ANTISLIP | DIN 51130 | UNE-ENV 12633 | BS 7976-2 | ANSI A137.1 |
| • | • | • | • | • | • | R9 | C2 | +36WET | >0,42 | |

PACKING

| UNIT | m ² | PIECES m ² | PIECES sq f | PIECES BOX | m ² BOX | sq ft BOX | WEIGHT BOX (KG) | WEIGHT BOX (lb) | BOXES PALLET | m ² PALLET | sq ft PALLET | WEIGHT PALLET (KG) | WEIGHT PALLET (lb) | cm PALLET | THICKNESS (mm) | THICKNESS (inch) |
|------|----------------|-----------------------|-------------|------------|--------------------|-----------|-----------------|-----------------|--------------|-----------------------|--------------|--------------------|--------------------|-----------|----------------|------------------|
| DOHA | • | 20 | 2 | 13 | 0.65 | 7 | 12.58 | 27.73 | 90 | 58.5 | 629.7 | 1155.64 | 2546.2 | 120x80x84 | 9 | 0.35 |